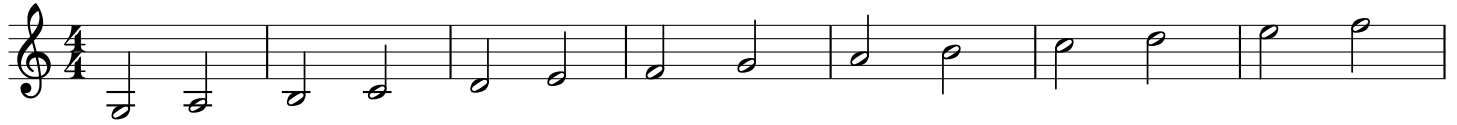


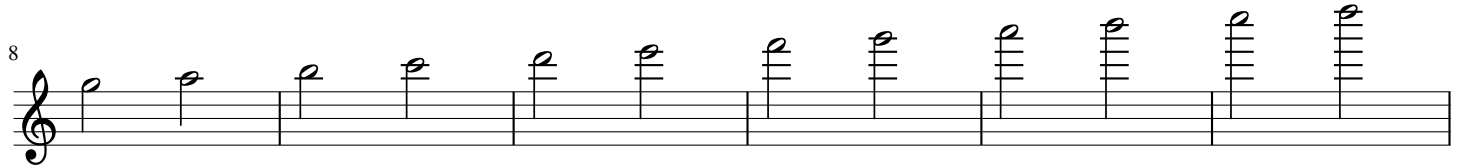


Reading Standard Notation

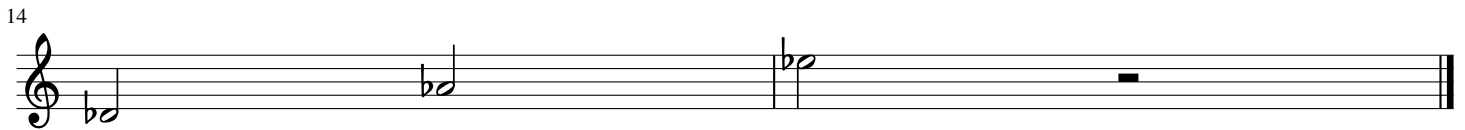
On a standard tuned mandolin



G	A	B	C	D	E	F	G	A	B	C	D	E	F
G0	G2	G4	G5	D0	D2	D3	D5	A0	A2	A3	A5	E0	E1
				G7	G9	G10	G12	D7	D9	D10	D12	A7	A8
								G14	G16	G17	G19	D14	D15



G	A	B	C	D	E	F	G	A	B	C	D
E3	E5	E7	E8	E10	E12	E13	E15	E17	E19	E20	E22
A10	A12	A14	A15	A17	A19	A20	A22				
D17	D19	D21	D22								



Db	Ab	Eb
G6	D6	A6

This reference page is designed to help you learn to read standard notation on mandolin.

You can use this to decipher any treble clef sheet music that you may encounter.

The top letter of each column of text is the name of the note depicted above.

The letters that are paired with numbers are string, fret coordinates.

When you are getting started, you might want to only use the first pair of coordinates for any given note.

To play a sharp (#) version of a note on this page, add one fret to the indicated coordinates.

To play a flat (b) version of a note on this page, subtract one fret.

The bottom row of notes on the page shows examples of how to "flatten" open string notes.